

## **Helpful hints on ordering your Pallet Rack**

This guide will help you determine the required heights and depths of the upright frames and the beam lengths and capacities needed to meet your load requirements.

### **Rack Height**

Rack Height is the height of the uprights/frames. Determine by adding the following:

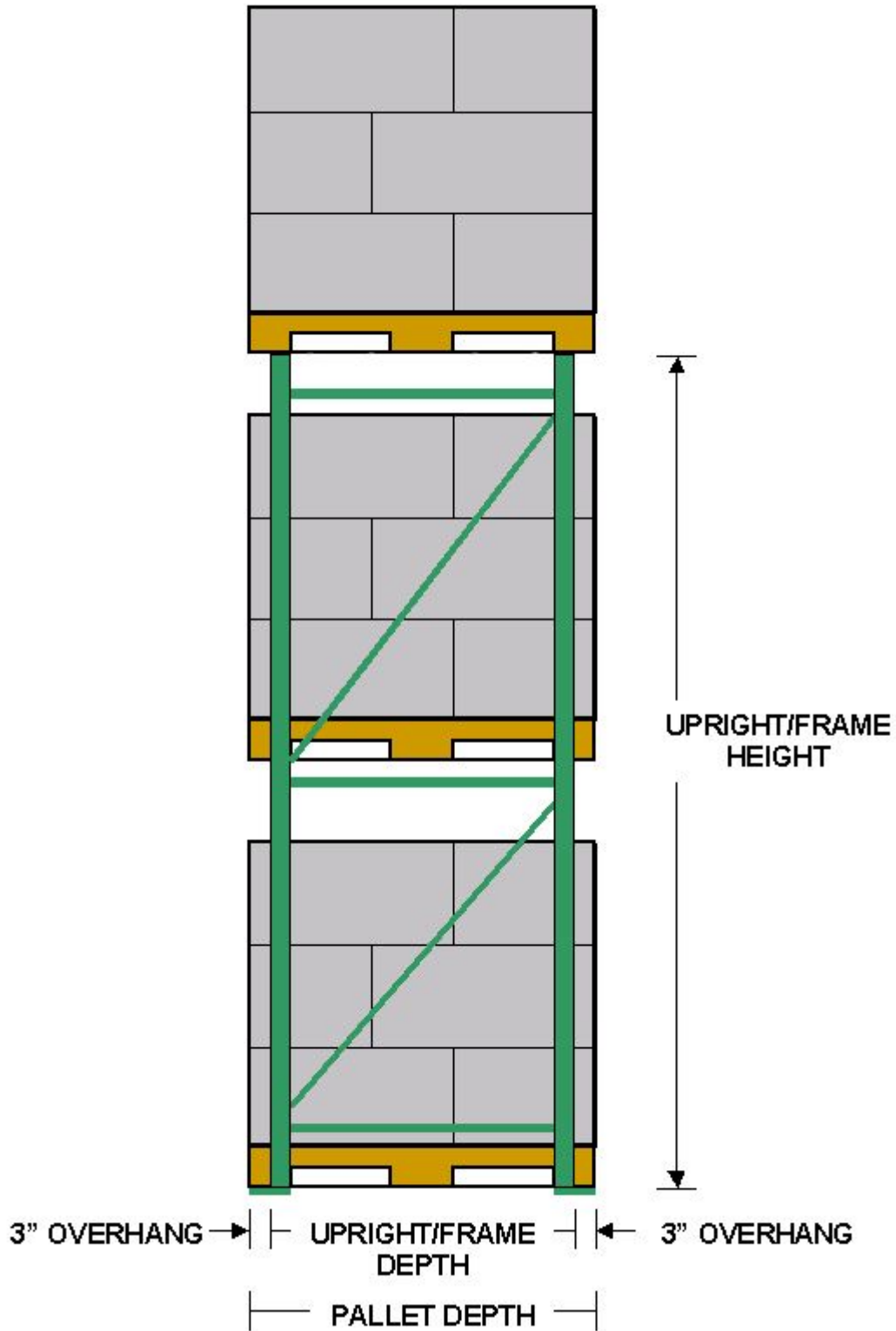
- Height of pallet loads (including the pallet)
  - Height of beams
  - 4" vertical clearance between top of load and bottom of beam
  - Sum of above dimensions equals frame/upright height
- 
- If pallet loads are stored on the top of the rack, beam location should be at least 6" less than the fork truck's lift height.
- 
- Also keep in mind ceiling height and the ceiling clearance required by local codes.

### **Rack Depth**

Rack depth is the depth of a single upright/frame. It depends on the design and size of pallet used.

- The front and back of the pallet should overhang approximately 3". Example: a 48" deep pallet requires a 42" deep frame. (3" overhang for both front and back.)

# PALLET RACK SIDE VIEW (Figure 1)

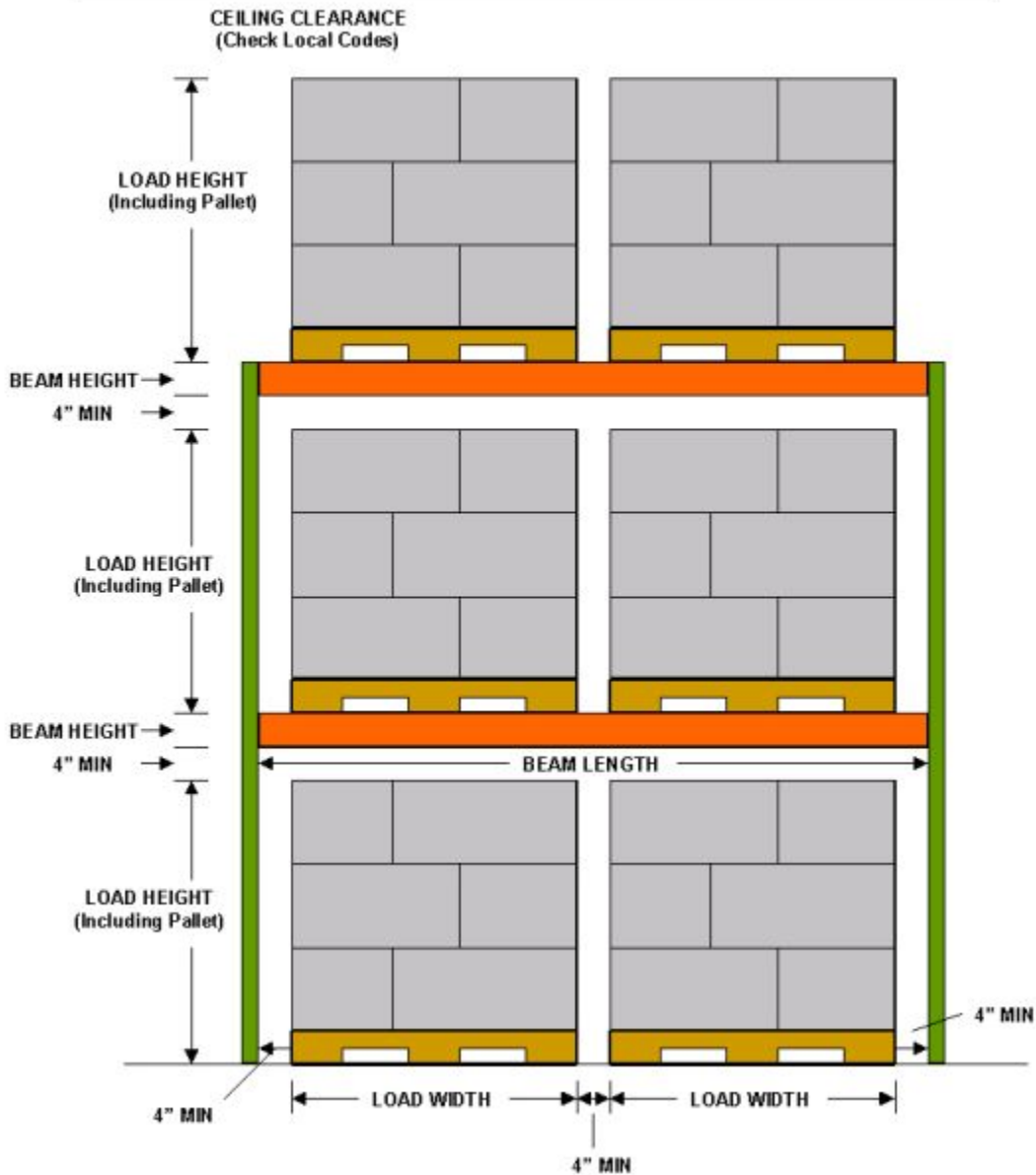


### Beam Length

Beam length is the distance between a pair of uprights/frames in each rack bay.

- Required beam length is determined by adding the width of pallet loads, plus 4" clearance between pallet loads, plus 4" clearance between loads and each upright/frame.

## PALLET RACK SECTION (FRONT VIEW) (Figure 2)



### Beam Capacity

Beam capacities are based on a pair of beams supporting an evenly distributed load.

- Determine the weight of each pallet load and multiply times the number of loads per shelf. Example: a pallet load weighs 2000lbs and there are two pallets per shelf. A beam capacity in excess of 4000lbs is required.

## MEASURING PALLET LOAD (Figure 3)

